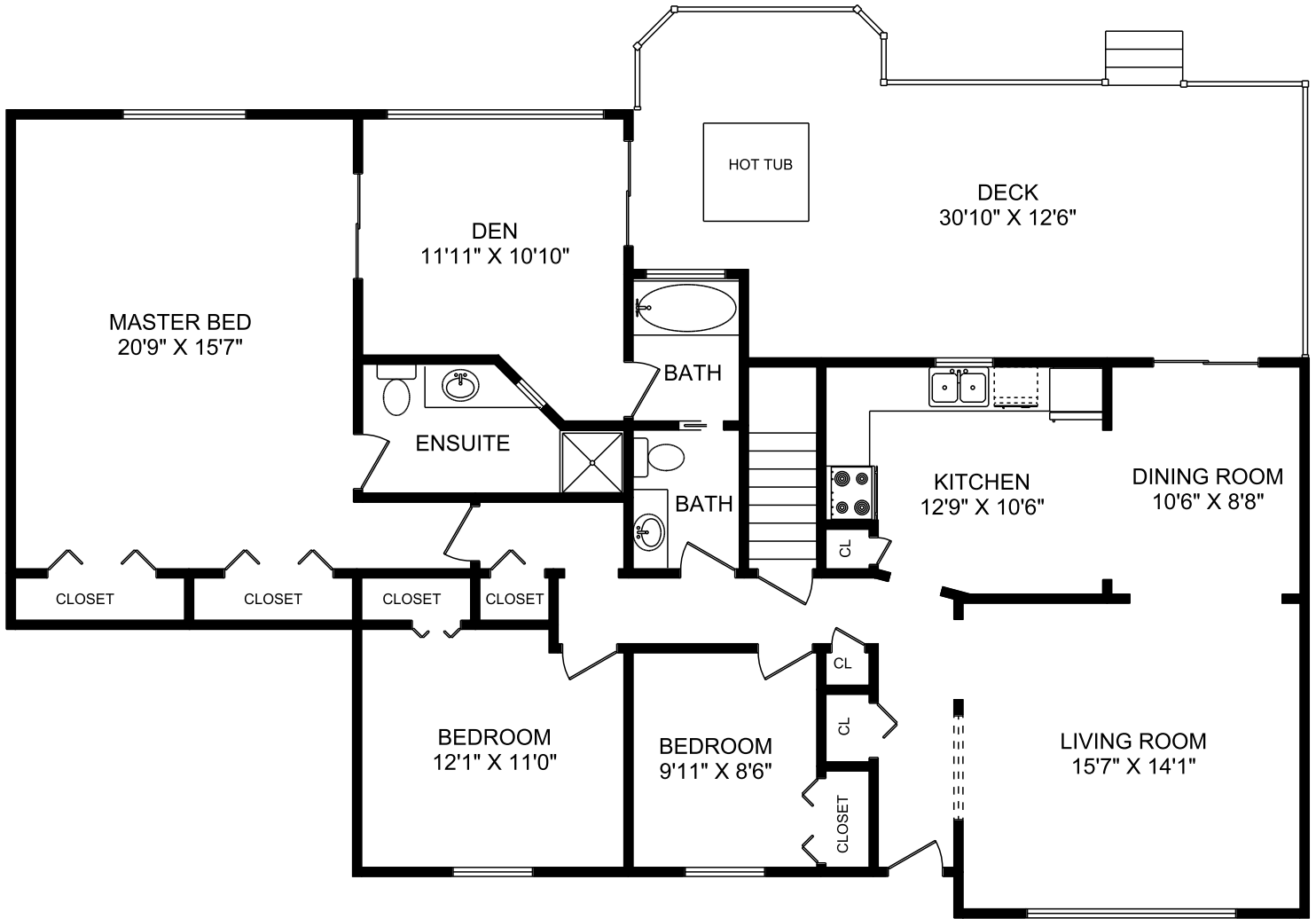


3015 VOLMER ROAD MAIN FLOOR



	FINISHED SQ.FT.	UNFINISHED SQ.FT.	TOTAL SQ.FT.
MAIN FLOOR	1,645	0	1,645
LOWER FLOOR	955	695	1,650
TOTAL	2,600	695	3,295
DECK		415	
MEASURED JUNE 12, 2008		NICO BAILLY	

All information furnished regarding this property is from sources deemed reliable but no warranty or representation is made to the accuracy thereof.

